

Test Size	AAMA Rating If tested	Air Inf 25 mph	Water psf	U-Factor		CRF	
				Clear/Air	Low-E/Argon	Clear/Air	Low-E/Argon
<b>Model 3400 Double Slider</b>							
6'0" x 5'0"	HS-C50	0.12	7.5	0.60	0.46	47	49

Liberty Glass and Metal Industries INC

Commercial  
3400 Series  
Horizontal Slider - Fixed

**Product Summary & Performance Data**

Model	3400 Horizontal Slider
AAMA Rating	HS-C50
Test Size	6'0"X5'0"
Frame Depth	3 1/4"
Insulated Glass Thickness	7/8"
Screen Option	1/2 or Full
Sash & Frame Extrusion	0.062
Sill Extrusion	0.078
Thermal Break	Yes
Air Infiltration (25mph) (cfm/sqft)	0.12
Water Test Pressure (psf)	7.5
Structural Load (psf)	75
Operating Force (lbf)	25
U-FACTOR Clear/Air	0.60
Low-E/Argon	0.46
CRF Clean / Air	47
Low E/Argon	49

U-Factor-Thermal Transmittance  
CRF-Condensation Resistance Factor

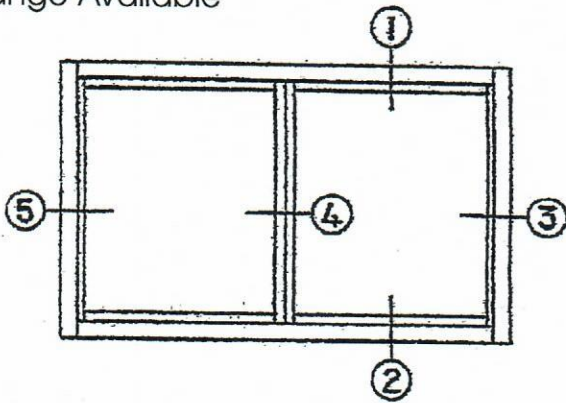
# 4800 Series Slider

Not to Scale

## Specifications:

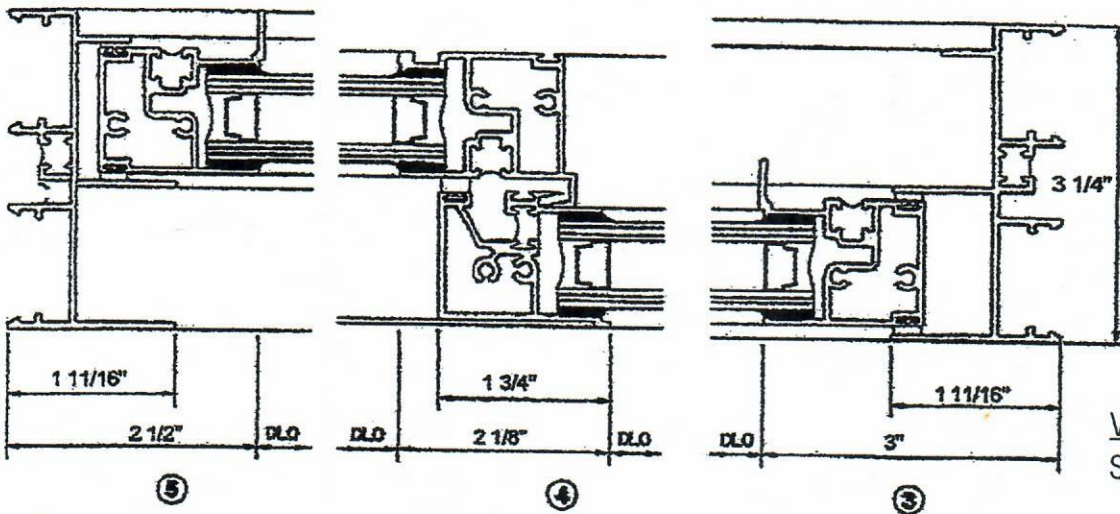
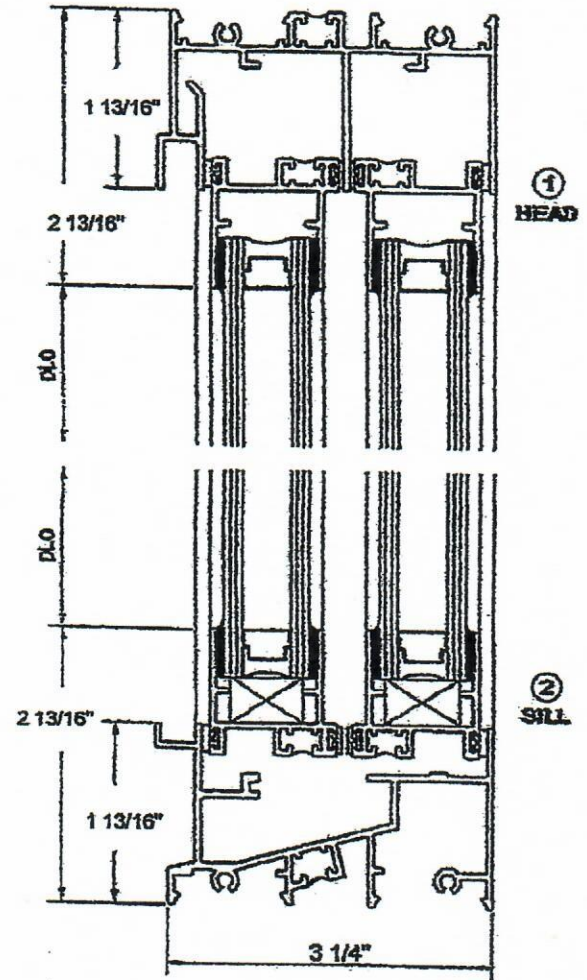
- \*3 1/4" Main Frame
- \*Thermally Broken
- \*Marine Glazing
- \*Exterior Flange Available

LIBERTY GLASS & METAL  
 339 RIVERSIDE DRIVE  
 N GROSVENORDALE, CT 06255



Window Configurations: XX, XOX, OXO  
 (Other configurations available)

Window Elevation  
 Scale: 3/8" = 1'-0"



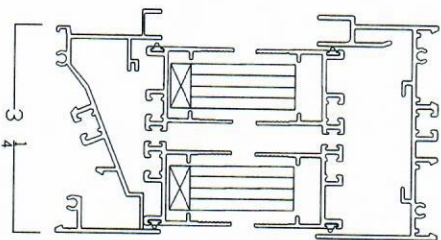
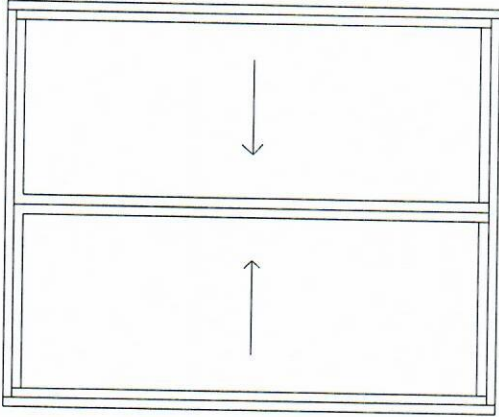
Window Details  
 Scale: 6" = 1'-0"

*Handwritten initials*

# 4800 Series Slider

Liberty Glass and Metal INC  
339 Riverside Dr  
N. Grosvonordale CT 06255  
P-860-923-3623  
F-860-923-9662

Window Configurations  
XX, XOX, OXO  
(Other Configurations  
available)



3 1/4" - 4800 Series Thermally Broken  
Horz Slider  
Hardware: Sweep Locks-  
Finish: Clear Anodized or Black Painted Finish  
Screen: Fiber Mesh Screens  
No Glass- Prep for 7/8"  
Not To Scale

